



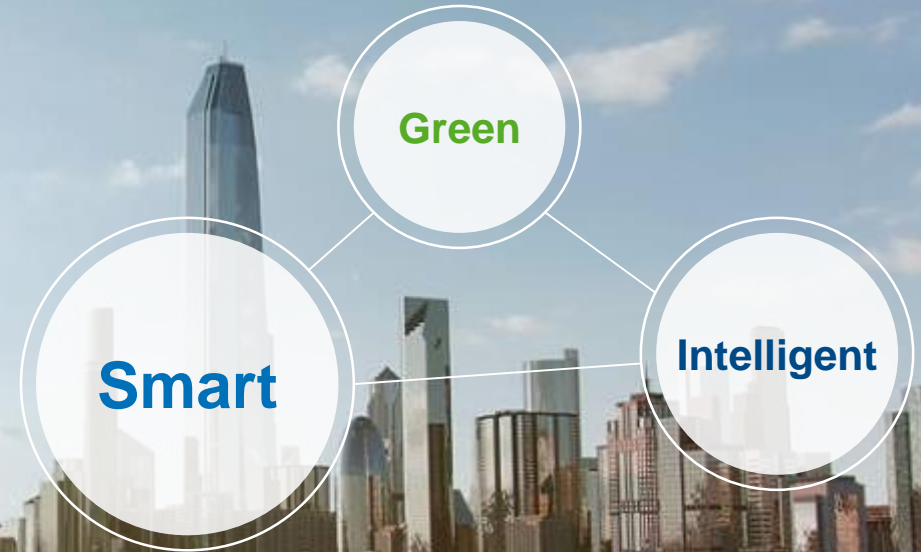
**CTBUH 2017**  
International Conference

Connecting  
the City People, Density &  
Infrastructure

# SMART BUILDING SOLUTIONS

Sascha Brozek, Head of Major Projects, KONE Corp.

It is about  
**PEOPLE** and **EFFICIENCY**

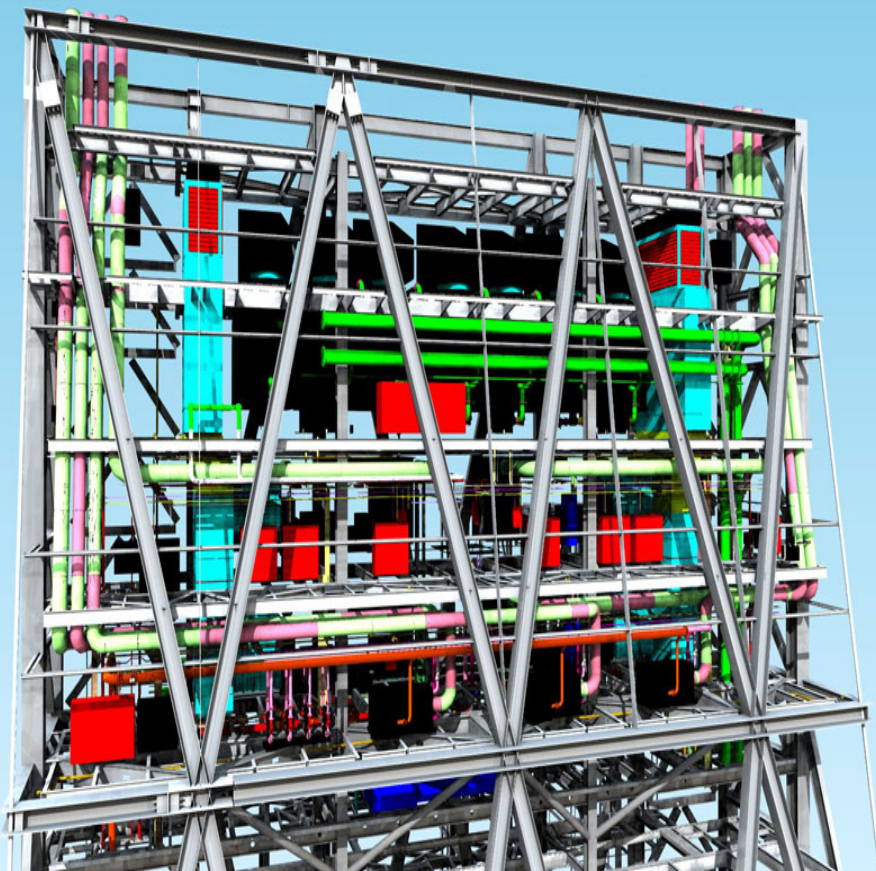








**Smart  
Design**





**Smart  
Construction**









A wide-angle photograph of a modern control room. The room is filled with numerous computer monitors displaying various data, charts, and maps. A person in a white lab coat is seated at a desk in the center, facing the monitors. The room has a blue carpet and a white ceiling with recessed lighting. A large white printer is visible on the right side of the desk. The overall atmosphere is professional and high-tech.

**Smart  
Operations**



Smart  
Integration





The world around us  
is getting smarter —  
and so are buildings





# People...

...moving smoothly & safely  
in and between buildings

- Functional
- Easy to navigate
- Adaptable for future





# People Flow for Smart Buildings



**Good People Flow** does not come by itself  
– it has to be designed

 **Data collection and analysis**



 **Planning and design**



 **Continuous monitoring**





Solutions for smooth and smart people flow in the building





# Destination

INCREASED PERFORMANCE AND COMFORT



INCREASED  
HANDLING CAPACITY



SHORTER TIME  
TO DESTINATION



BETTER USER  
EXPERIENCE



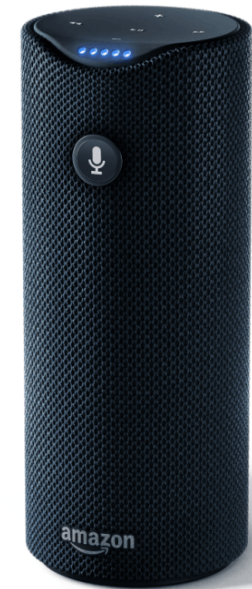
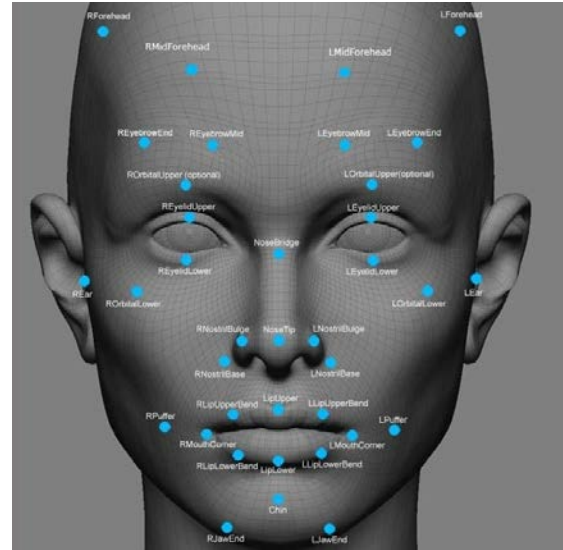
IMPROVED  
SECURITY



A close-up photograph of a person's hands holding a black smartphone. The phone's screen displays an elevator control interface. At the top, the number "7" is visible. Below it is a large white square button with a black border containing the letter "H". Underneath the "H" button are three smaller circular buttons: the top one contains the number "10", the middle one contains an upward-pointing arrow, and the bottom one contains the number "5". The person's right hand is touching the "H" button. The background is a blurred office or building interior.

Elevator calls with  
any device







# Access

INTEGRATED SECURITY AND EASE OF USE



IMPROVED  
PEOPLE FLOW



Integrated  
to ELEVATORS



CONVENIENCE  
FOR USERS



FOR FUTURE  
NEEDS



# Information

KEEPING USERS INFORMED



COMMUNICATION  
CHANNEL



CUSTOMIZABLE  
CONTENT



IMPROVED  
GUIDANCE



VISUALLY  
APPEALING DESIGN



EASY TO UPDATE



Weather

20:43  
20.10.2016

Today  
15°C 13°C  
7°C

next stops  
3 7 11

priority service

MON TUE WED THU FRI SAT

SONY



CE1204 12165404 2008  
**8 PERSONS**  
950kg





# Monitoring and Control



REAL-TIME  
Data



24/7  
MONITORING



Analytics &  
Connected Services



INTEGRATION



adds VALUE  
TO THE BUILDING



# Smart Buildings predictions - People Flow perspective



**Smarter Buildings**

**Better Buildings**



**Digital cross-functional Design & Construction**



**Sensors, Building-IoT, Big Data and Analytics, Bots**

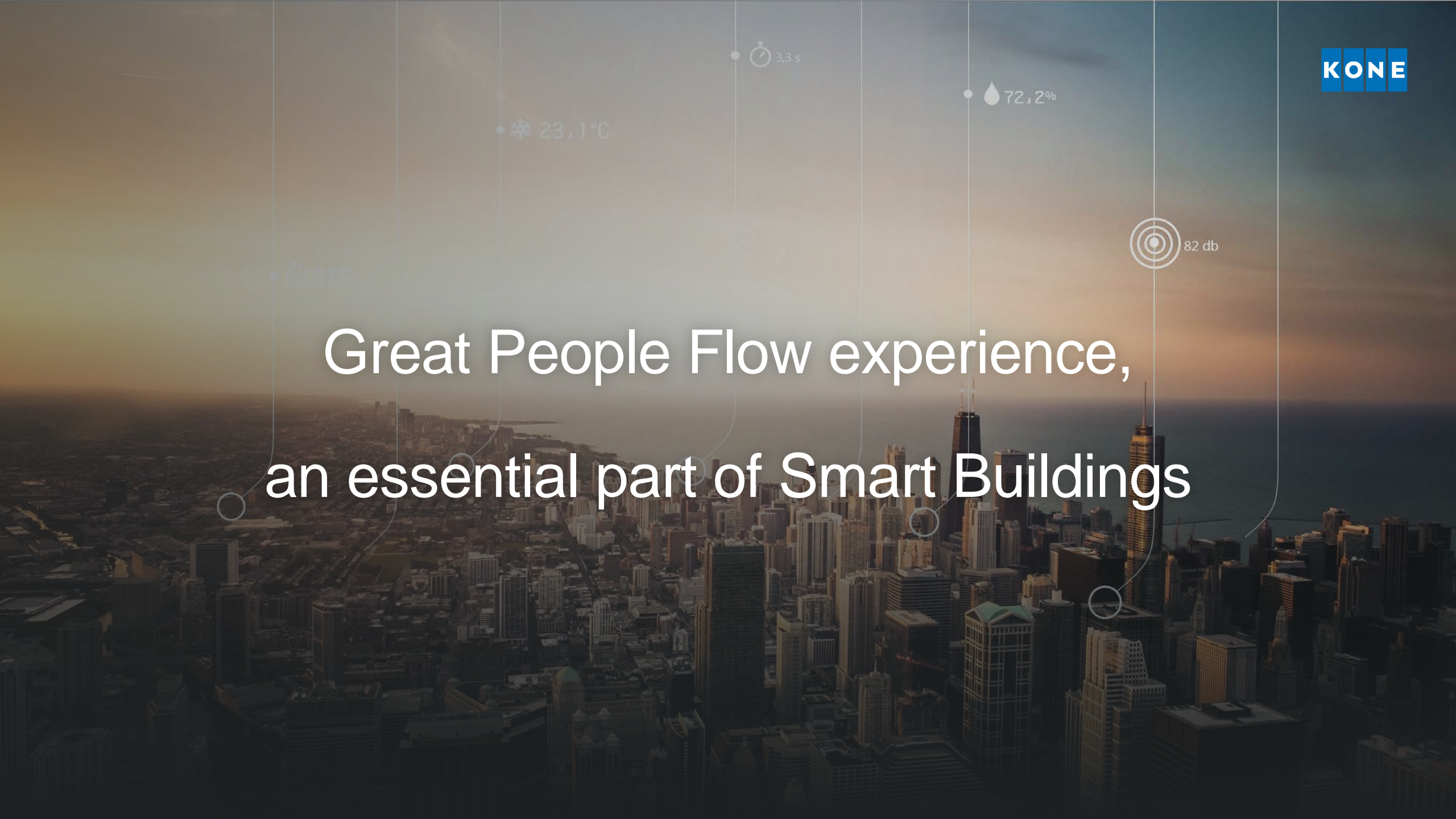


**New Functionalities enabled by System Integration**



**Better People Flow and user experience**



The background features a cityscape at sunset with a digital overlay of smart building data. The data points include: a sun icon with "23,1°C", a clock icon with "3,3 s", a water drop icon with "72,2%", a target icon with "82 db", and a building icon with "375". The main text is centered over the cityscape.

# Great People Flow experience, an essential part of Smart Buildings