



ESCALATOR Do's and Don'ts

Being observant and acting sensibly can prevent escalator injuries and help ensure a safe and comfortable ride for everyone. Following these simple guidelines can help enhance the safety of you and those around you.



✓ Do accompany and supervise children: hold their hands for the duration of the ride.

✗ Don't let children play on or around an escalator.



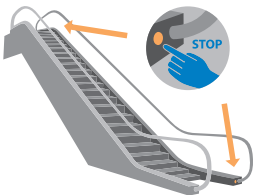
✓ Do face forward and hold the handrail.

✗ Don't sit on the escalator steps or the handrail or lean over the side.

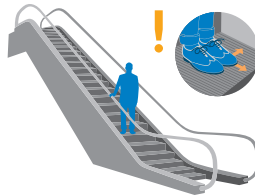


✓ Do step off properly from the escalator and make room for the next passengers to step off.

✗ Don't congregate or congest the escalator exit / landing at the end of the ride.

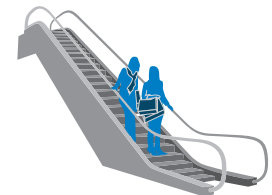


✓ Do use the emergency stop button in the event of an incident or malfunction.

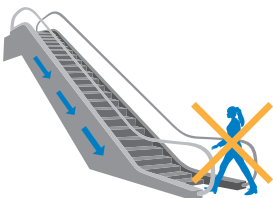


✓ Do keep feet firmly on the escalator step and away from the escalator sides.

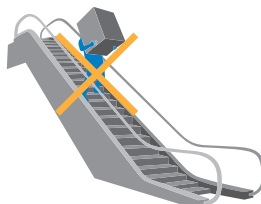
✗ Don't use an escalator without assistance if your physical mobility is impaired.



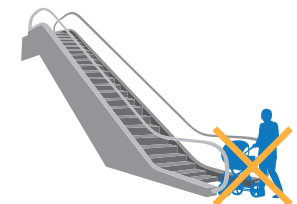
✓ Do secure loose items before travelling on an escalator: e.g. bags, long scarfs or untied shoelaces.



✗ Don't enter or exit the escalator in the wrong direction.



✗ Don't transport large, long, or heavy items on the escalator.



✗ Don't take strollers, prams or shopping trolleys on an escalator: your physical mobility is impaired.



ELEVATOR Dos and Don'ts

Being observant and acting sensibly can prevent elevator injuries and help ensure a safe and comfortable ride for everyone. Following these simple guidelines can help enhance the safety of you and those around you.



✓ Do be patient if the elevator is full and wait for the next ride.

✗ Don't overload or exceed the elevator capacity.



✓ Do stand to the back of the elevator: face forward, keeping away from the doors.

✗ Don't place hands on the elevator doors.



✓ Do accompany children: hold their hands for the duration of the ride.

✗ Don't play in or around an elevator.



✓ Do press the alarm button and wait for the service centre to help.

✗ Don't attempt to get out of an elevator on your own if you become trapped.



✓ Do use a service or freight elevator for larger or heavy items.

✗ Don't transport heavy or large items in a passenger elevator.



✓ Do use the door opening button to hold an elevator for another person.

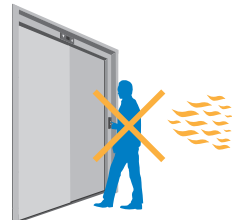
✗ Don't attempt to keep doors open by placing objects or body parts in their way.



✓ Do watch your step when entering or exiting the elevator; it may not be level with the ground.



✓ Do report to the facility management company anything unusual or broken.



✗ Don't use an elevator in the case of a fire or other emergency situation.